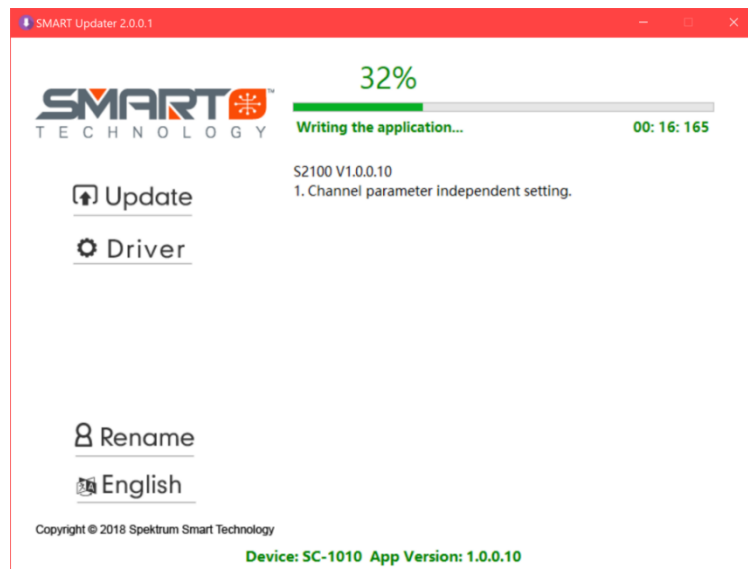


Items Needed to Perform Updates on your Spektrum Smart Charger

- A Windows Operating System PC (Windows 7 and up)
- Spektrum SPMXCA100 Update Cable OR a USB to Micro USB cable
- Any Spektrum Smart Charger or the XBC100 Smart Checker

How to Perform Update – Step by Step Guide

1. **See Page 2** - Find the latest update download for your Smart device and click the link to download
2. Once downloaded, please extract the .ZIP file to a location that you can easily find, we suggest the Desktop
3. Locate the SCU.exe file and open/execute
4. You will be presented with this screen
5. Plug in power to your Smart Charger
6. Then plug in the XCA100 or USB Update cable into your PC and into the port on side of charger
7. The lower portion of the screen will then display the Device and firmware version currently on your Smart Charger
 - *IF the included driver package fails to install download this alternative version*
[HERE – XCA100 Driver](#)
8. Click the **Update** button to install the update on your Smart Charger. A progress bar will appear on your computer screen and the screen/indicator on your Smart Charger will notify that an update is in progress.



Wait until the update is complete and enjoy!

Smart Charger Firmware Downloads

G2 User Interface

S1200 Spektrum Smart S1200 DC Charger, 1x200W – V3.1.0.5 - [Download](#)

S2100 Spektrum Smart S2100 AC Dual Port Charger, 2x100W – V1.1.0.7 - [Download](#)

S1500 Smart S1500 DC Charger, 1x500W – V1.1.0.3 - [Download](#)

S1100 Spektrum Smart S1100 AC Charger, 1x100W – V1.0.0.30 - [Download](#)

S150 Smart S150 AC/DC Charger, 1x50W – V1.0.0.26 - [Download](#)

S120 Spektrum Smart S120 USB-C Charger, 1x20W – V1.0.2.2 - [Download](#)

XBC100 Smart Checker V1.0.0.18 - [Download](#)

Smart Charger Firmware Change Logs

S1200 DC Smart Charger

V3.1.0.5

- G2 Battery Update will push to battery firmware if out of date

V3.1.0.4

- Updated Generation 2 (G2) user interface
- New features included with G2 Interface
 - Automatic Start with Smart Batteries
 - Estimated Charge Time Remaining
 - Charge and Balance Smart G2 Batteries

S2100 AC Smart Charger

V1.1.0.7

- G2 Battery Update will push to battery firmware if out of date

V1.1.0.3

- Updated Generation 2 (G2) user interface
- New features included with G2 Interface
 - Automatic Start with Smart Batteries
 - Estimated Charge Time Remaining
 - Charge and Balance Smart G2 Batteries

S1500 DC Smart Charger

V1.1.0.3

- G2 Battery Update will push to battery firmware if out of date

V1.1.0.2

- Updated Generation 2 (G2) user interface
- New features included with G2 Interface
 - Automatic Start with Smart Batteries
 - Estimated Charge Time Remaining
 - Charge and Balance Smart G2 Batteries

S1100 AC Smart Charger

V1.1.0.3

- G2 Battery Update will push to battery firmware if out of date
- Fixes G2 balance lead required error

V1.0.0.29

- Improved G2 UI and Time Remaining Calculations

Spektrum Smart Charger

Update instructions, Download Links
and Change Log

25 – February - 2021



S150 AC/DC Smart Charger

V1.0.0.26

- Improved NiMH Charging Calculations

S120 USB Powered Smart Charger

V1.0.2.2

- Improved NiMH Charging Calculations

XBC100 Smart Charger

V1.0.0.18

- Fixed voltage miscalculation
- G2 Battery Update will push to battery firmware if out of date